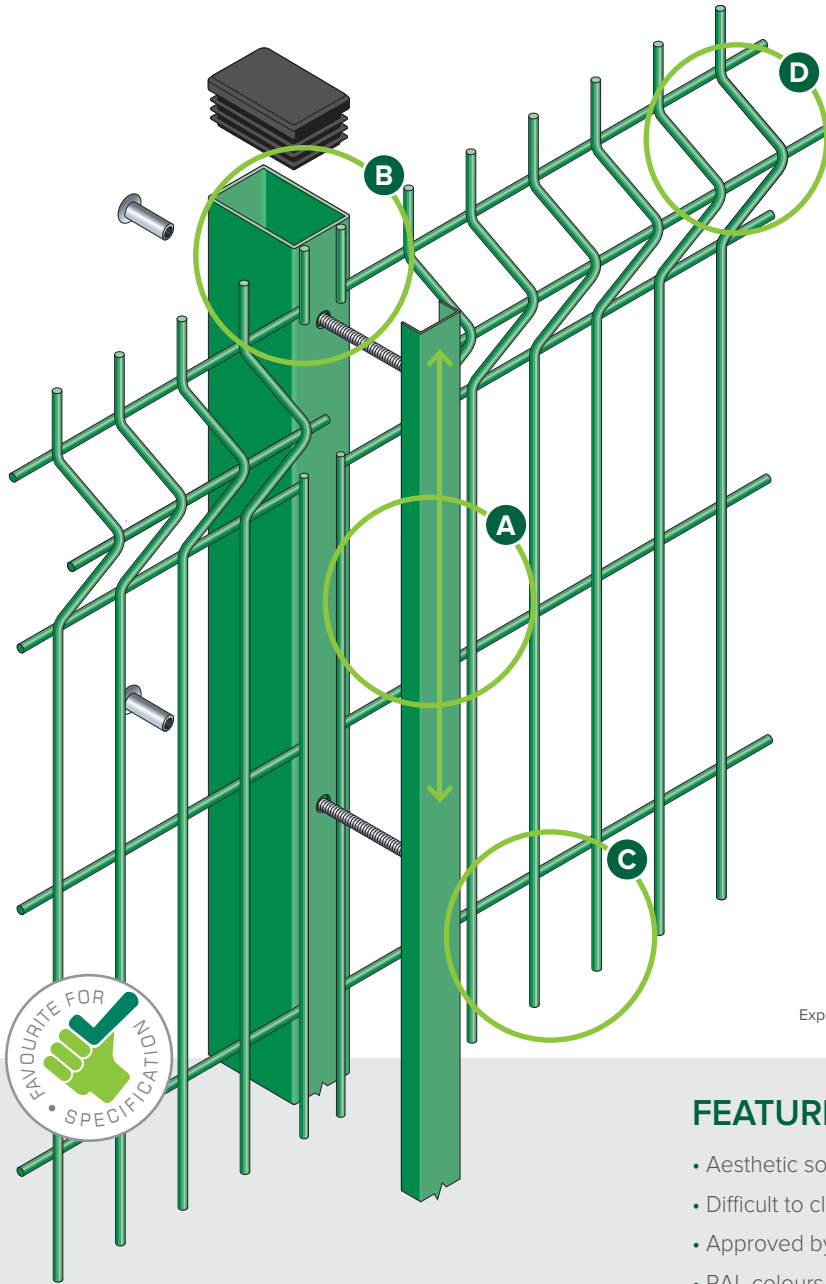


ULTIMATE™

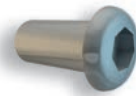
PROFILED PANEL SYSTEM



- A** Full length clamp bar for secure fixing and infinitely variable panel stepping within post length
- B** Galvanised and polyester powder coated panels and posts
- C** Unique 'SafeTfix' hidden fixing system
- D** Profiled for extra strength

Conforms to **BS1722: Part 14**

SafeTfix™



SafeTfix fixing system for added safety and security.



Exploded view of post and clamp for Ultimate panel system

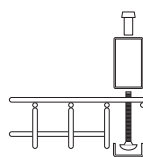
FEATURES

- Aesthetic solution
- Difficult to climb
- Approved by planning authorities
- RAL colours available

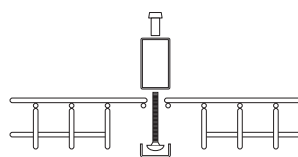
SUITABLE FOR

- Industrial buildings
- Public buildings
- Schools
- Airports and seaports

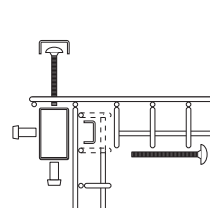
SYSTEM DETAILS



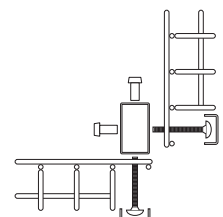
Plan of end



Plan of panels in line



Plan of internal corner



Plan of external corner



DESCRIPTION

With so many perimeter fencing systems to choose from, it can be difficult to pick the one that's right for you. But like its name suggests, our Ultimate™ profiled panel system is one of the most popular, highest quality and hugely versatile options available on the market.

Approved by a multitude of planning authorities, this welded steel wire mesh panel system is suitable for industrial and public buildings, schools, and even high security locations like airports and seaports.

Ultimate™ offers strong profiled panels with close wire centres, which are fixed securely to posts using a full length clamp bar. This not only makes your fencing exceptionally secure and difficult for intruders to climb, but it looks modern and stylish around the border of your premises.

25mm Spikes at the top of each panel enhance the security of the Ultimate™ fencing, and are matched by the added peace of mind that it conforms to BS 1722-14 for open mesh steel panel fences.

FINISH

Galvanised and polyester powder-coated, after stringent cleaning and treatment, to give a well adhered coating of 60 microns. RAL range of colours available.

PANEL DIMENSIONS

Heights	1800, 2030, 2430, 3030mm
Panel width	2475mm (up to 2430mm) 2050mm (3030mm)
Mesh size	165 x 38mm
Wire diameter	5mm
Triangular folds	3 or 4
Top edge projection	25mm [†]

[†] Can be inverted to give flush edge.

All dimensions are nominal

ULTIMATE POSTS AND CLAMPS

For the Ultimate profiled panel system CLD has developed a post and clamp system which provides a simple method of securing. Complete with an anti-vandal fastener, installed with either a battery-powered driver or traditional tools, this system offers a rapid and secure installation.

SLOPING GROUND

Panels can be stepped as required. Where gradients exceed 1:20, it is recommended that taller panels are either part-buried or additional posts are used.

VARIATIONS

The posts are available in a range of lengths to accommodate panel heights and ground conditions. In addition, many variations are available:

- Wall fixing plates, cranked posts or base plated
- Cranked or straight extensions for barbed or razor wire
- Cranked panels

DIMENSIONS

Posts	60 x 40mm RHS (up to 2730mm) 80 x 40mm RHS (3030mm)
Clamping channels	41 x 21mm steel
Post centres	2485mm (up to 2430mm) 2060mm (3030mm)

